



BemoFlex Trench Belt

Cable
Cable trench & Conductor
rails protection system

High performing products for the most demanding applications



- Channel cover solutions
- Rubber cover solutions
- Trench options
- Onsite assistance
- Additional accessories



High performance products

for the most demanding applications

Bemo Rail is known worldwide in the field of rail and crane track technology, with experience for over 50 years.

Our effort is focused on improving the efficiency creating an as eco friendly as possible industry. This is reflected in the product range, among which the Bemoflex Trench Belt.

These cable reels are specially designed for this purpose. The cable reels offer better results in terms of durability and the life of the cables is extended due to their high standard.

As mean of prolonging the cable life, the Bemoflex Trench Belt system was designed. Consisting in a cable trench cover composed of multiple layer of neoprene and a double metal frame.

When the trench is totally cover by Bemoflex, the system protects the cable and the cable channel even against heavy road traffic, avoiding dangerous breaks in the cable and possible injuries to staff.

Specially recommended for shipyards, container terminals and general industries, it is used by several main ports and terminal operators worldwide.



Channel cover solutions

The 'old system'

- Steel covers for the channels.
- Only for slow speed cranes.
- Noisy system.
- Old fashioned system.



B&Y safe!

All BemoFlex Trench Belt references can be customized with vulcanized yellow lines as a precaution signal, under request.

Rubber cover solutions

BemoFlex Trench Belt protection system

The best protection system for cables that allows their correct fitting in the trench or channel, prolonging their life time.

Reinforced steel core flexible belt.

Prevents the accumulation of waste inside the trench.

SAFETY: Avoids injuries and possible accidents to the staff.

Quick and easy installation.

Suitable for any cable guide.

Valid for modern and automatic machinery.

High visibility.

BemoFlex Trench Belt rubber cover solution

Model	Reference	Measure
BemoFlex Trench Belt	BemoFlex Trench Belt 300 BemoFlex Trench Belt 400 BemoFlex Trench Belt 500 BemoFlex Trench Belt 600	295 mm 395 mm 495 mm 595 mm
BemoFlex Trench Belt XTRA	BemoFlex Trench Belt XTRA300 BemoFlex Trench Belt XTRA400 BemoFlex Trench Belt XTRA500 BemoFlex Trench Belt XTRA600	295 mm 395 mm 495 mm 595 mm
BemoFlex Trench Belt SUPER-XTRA	BemoFlex Trench Belt SUPERXTRA300 BemoFlex Trench Belt SUPERXTRA400 BemoFlex Trench Belt SUPERXTRA500 BemoFlex Trench Belt SUPERXTRA600	295 mm 395 mm 495 mm 595 mm
BemoFlex Trench Belt SUPER-XTRA-PLU	BemoFlex Trench Belt SUPERXTRAPLUS300 BemoFlex Trench Belt SUPERXTRAPLUS400 BemoFlex Trench Belt SUPERXTRAPLUS500 BemoFlex Trench Belt SUPERXTRAPLUS600	295 mm 395 mm 495 mm 595 mm

Bemo Rail can customize sizes and measurements under customer's request



BemoFlex Trench Belt rubber cover solution

	BemoFlex Trench Belt	BemoFlex Trench Belt-XTRA	BemoFlex Trench Belt SUPER-XTRA	BemoFlex Trench Belt-XTRA plus
Description	Designed for Sea-Side. Very light traffic and pedestrian crossing.	Designed for occasional traffic and pedestrian crossing.	Designed for usual light traffic and occasional heavy traffic.	Designed for very intensive heavy traffic.
Thickness	≥ 15 mm	≥ 15 mm	≥ 15 mm	≥ 20 mm
Composition	80% CR Neopren 15% Steel cord 5% Dipped Nylon	75% CR Neopren 20% Steel cord 5% Dipped Nylon	72% CR Neopren 23% Steel cord 5% Dipped Nylon	50% CR Neopren 40% Steel cord 10% Dipped Nylon
Temperature range	-35°C up to +120°C -31°F up to 248°F	-35°C up to +120°C -31°F up to 248°F	-35°C up to +120°C -31°F up to 248°F	-35°C up to +120°C -31°F up to 248°F
Transversal Breaking Load	≥ 250 N/mm	≥ 500 N/mm	≥ 790 N/mm	≥ 790 N/mm
Longitudinal Breaking Load	≥ 100 N/mm	≥ 100 N/mm	≥ 500 N/mm	≥ 700 N/mm

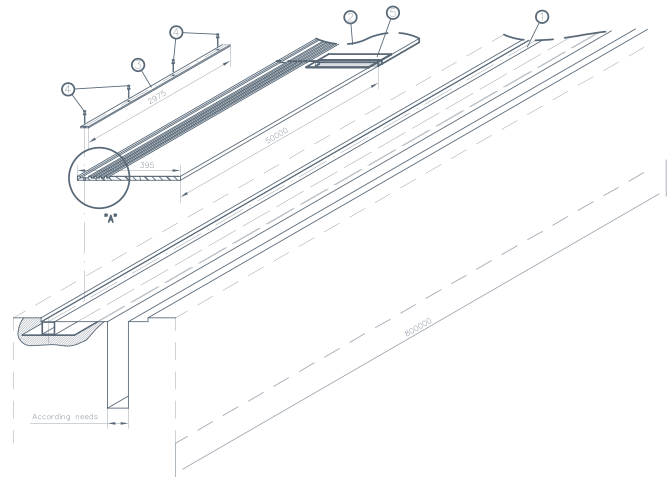
Composition-Neoprene rubber specific formula for marine environments 65° SHORE

Opening angle	90	°
Estimated runtime	> 1.500.000	cycles
Hardness	62 ± 5	°Sh A
Abrasion	130	mm3
Breaking Elongation	400	%



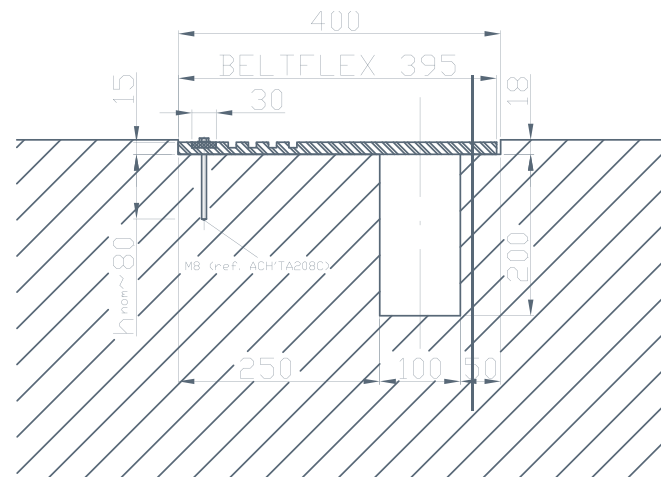
Trench options

Concrete trench with belt fixing device



- Trench made of pure concrete.
- Supplied with a BemoFlex Trench Belt fixing assembly and

Direct connection to concrete channel



- The belt is directly connected to the concrete channel with special bolts.

Onsite assistance

Belt length fixing systems

We have the possibility to offer two different options:

- Conventional system: The union of the different belt length is made with stainless steel coupling links
- Vulcanization: Using a special equipment, we join the different belt lengths, giving an uninterrupted run of the belt. With this system, we reduce the possibility of breaks in the belt, caused by the damaged coupling links.





Up your trench

We can propose and develop a totally customized solution for your old cable trench

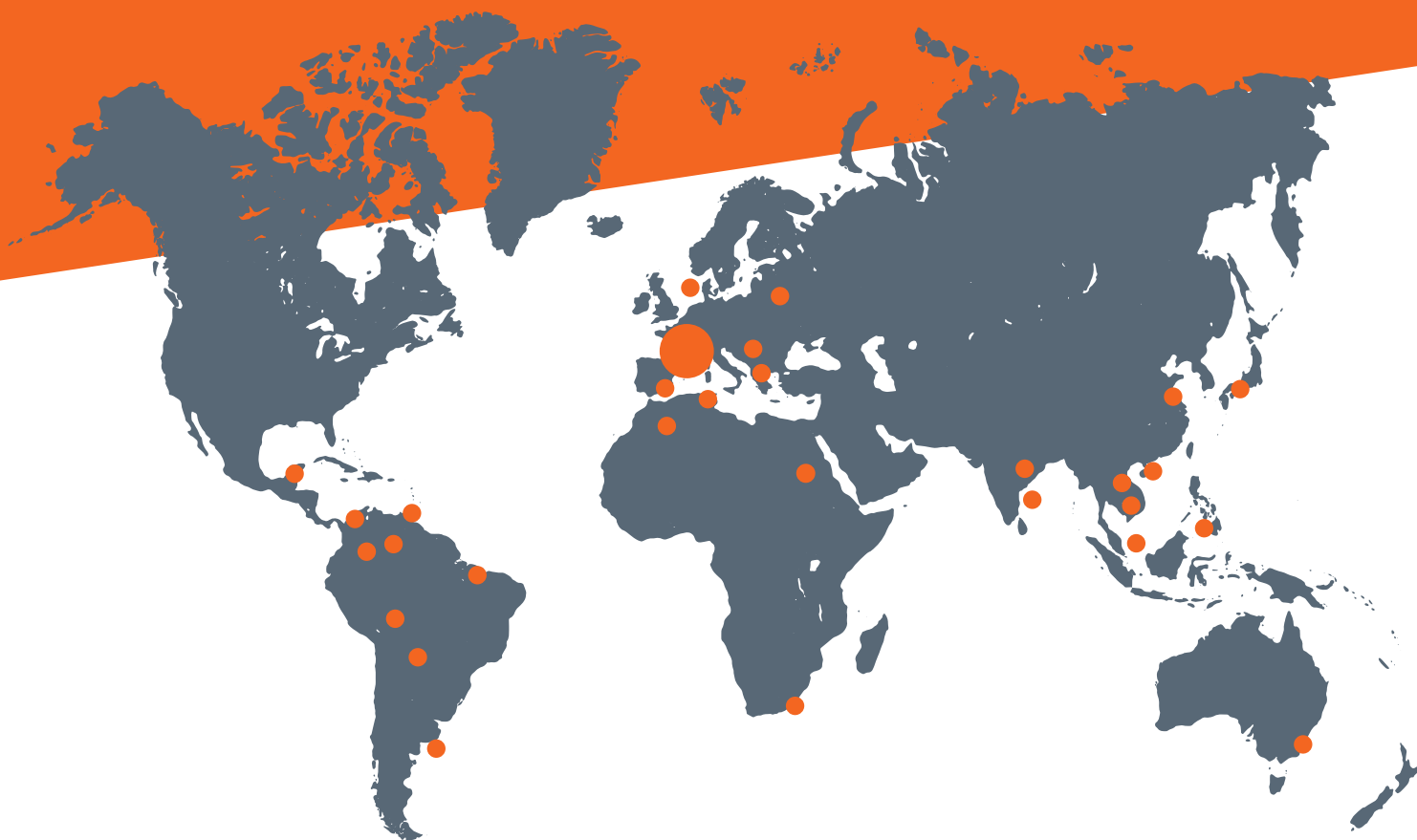


Additional accessories

Belt lifters

The belt lifter enables the perfect elevation of the rubber cover of the channel (BemoFlex Trench Belt System) while the crane is operating. They are specially designed and manufactured depending on the channel and crane sizes. All our belt lifters are suitable with all channel and rubber cover manufacturers.

Contact



Bemo Rail BV

Debbemeerweg 59
1749 DK Warmenhuizen
The Netherlands

+31 (0)226 - 42 53 00
info@bemorail.com
www.bemorail.com

